

CRACK THE COLD CASE

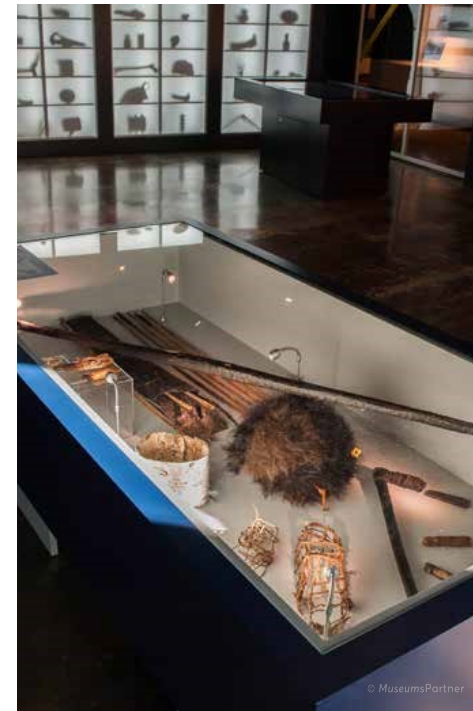


ÖTZI THE ICEMAN

© MuseumsPartner

The Iceman 'Ötzi' is the oldest known, best-preserved and most studied mummy in the world. Since his discovery in 1991, Ötzi has been exciting subject of countless news reports, scientific publications and documentaries. *Ötzi the Iceman: Crack the Cold Case* sheds light on his life and death and makes his remarkable story accessible for people around the world. This is a story of mountains, mummies, archaeology, ancestry, forensics and the most ancient murder mystery of all. It is an open-ended story as new discoveries are still being made, still making headlines.

Visitors are not just invited to compare different theories on the Iceman but also have the chance to piece together how this crime unfolded and to solve this ancient murder mystery. The exhibition's thematic design evoking different settings, such as the find site or a forensic laboratory, a wide range of interactives, films, holograms, radio features, 3D-animations, augmented reality and hands-on elements



© MuseumsPartner



© MuseumsPartner

open an extraordinary window onto the intriguing life and story of the Iceman. An exact replica of the Iceman along with a scientific reconstruction of his appearance alive, original artifacts, such as a prehistoric maple leaf, as well as exact replicas of the items, equipment and tools deemed too unstable to travel, allow visitors to experience the Iceman and the time he lived in first-hand.

Size: 300–1000 m²

Interactive timeline, research laboratory and 'mummy' examination table, crime scene diorama

Radio features, films, 3D-animations, immersive true crime experience, augmented reality

Ötzi the Iceman: Crack the Cold Case is a cooperation with the **Continium Discovery Center** and the **South Tyrol Museum of Archaeology**.